



ORRI-TECH
(Nig.) Ltd.



CORPORATE PROFILE



ELECTRICAL
ENGINEERS



MECHANICAL
ENGINEERS



TELECOM
ENGINEERS



CONTRACTORS

We Have The Solution

Head Office

Orri-Tech House
Abu Oibo Ikpea Street,
Km 22, Lekki-Epe Express Way, Ajah
Lagos, Nigeria

Tel. +234 1 774 2080, 740 1558

E-Mail: info@orritech.com
orritech@mail.com

www.orritech.com



ORRI-TECH
(Nig.) Ltd.

Contents

Welcome Message

MD 's Statement

Corporate Philosophy

Our Vision

Our Mission

Our Approach

The Company

History

Our Services

The Professional Team

Our People

Training Policy

Quality Control

Quality Policy

Health & Safety Objective

Environmental Policy

Organogram

Our Clientele

Project History

Gallery

MD 's Statements

Our corporate profile is designed to provide first hand information about the company and it's services. We are a leading Electrical and Mechanical Engineering Services provider involved in the provision and installation of Electrical and Mechanical Engineering Services in Private, Commercial and Industrial buildings, Complexes and Estates. We are also involved in power line construction and establishments of transformer substations.

In our many years of practice, we have developed a reputation for reliability and excellence based on our twin core values of staff competence and professionalism.

In accordance with our company's mission statement our staff are highly skilled and these skills are upgraded by continuous training and motivation to provide improved services to the optimum benefit of all and in particular our clients

We have attained and sustained impressive growth indices in our over 20 years of doing business in Nigeria. We have continued to improve the value of our professional services by continuously evolving strategies in accordance with industry best practices.

Our personal attention to those details of service delivery our competitors tend to overlook or disregard is unrivalled and this has given us a broad-based clientele.



**Frank
ATSAGBEDE**

“ WE HAVE ATTAINED AND SUSTAINED IMPRESSIVE GROWTH INDICES IN OUR OVER 20 YEARS OF DOING BUSINESS IN NIGERIA ”

Corporate Philosophy



OUR VISION

To be a leading Engineering Services provider and to become the FIRST OPTION for our numerous clients.

OUR MISSION

To always surpass our client's expectations by consistently delivering high quality projects on schedule.

OUR APPROACH

- Motivation of employees
- Continuous training of employees
- Use of good materials
- First class workmanship
- Use of best available technology
- Use of industry best practices

All to achieve our goals and objectives towards surpassing client's expectations.

The Company

History in Brief

ORRI-TECH NIGERIA LIMITED was incorporated as a private limited liability company in May 1991 but did not commence operation until September 1993

From a modest beginning with about 3 members of staff, the company now employs close to 80 people. The company has in it's employment, experienced and qualified engineers, administrators, quantity surveyors, accountants, technologist, technicians and craftsmen.

Our clientele base has grown significantly over the years we have clients in virtually all sectors of the economy, i.e the telecommunication industry, oil and gas, power sector, manufacturing sector, financial sector educational institution, judiciary, government parastatals etc.



Our Services

We provide excellent services in the following areas:



ELECTRICAL ENGINEERING

We undertake projects in the following areas of Electrical Engineering.

- Electrical Installations in Residential, Commercial and Industrial buildings.
- Construction of overhead lines up to 33KV voltage level
- Construction of transformer substations.
- Installation of HV/LV panels and switch gears.
- Supply, Installation and Maintenance of fire alarm systems.
- Supply, Installation and Maintenance of burglary alarm systems.
- Complete Electrical and Instrument Project Engineering, Estimating and Scheduling for new installations and/or modifications of existing systems.
- Diagnosing, trouble-shooting and verifying fail-safe design of new and/or existing safety systems.
- Supply and Installation of Generating Sets.
- Indoor/Outdoor Lighting
- Electrical Plan Designs and Layouts
- Fire Protection & Security Systems
- Motor Control Centre Layouts
- Branch Circuit Layouts & Panel Scheduling
- Logic & Ladder Diagrams
- Control Panel Layouts
- Control Room Layouts
- Instrumentation Loop Diagrams
- Programmable Controller Field
- Installation of CCTV and Access control System.



MECHANICAL ENGINEERING

- Supply and Installation of Pumping Systems
- Plumbing Installation in Residential, Commercial and Industrial buildings.
- Supply and Installation of Air-Conditioning systems.
- Utility Piping Systems
- Natural Gas
- Ventilation
- Dust Control
- Underground Systems
- Vacuum Systems
- Pipe Stress Analysis
- Process Drain Systems
- Explosion Hazard Design
- Commercial And Industrial Facility Support
- Fire Fighting Installation in Residential, Commercial and Industrial buildings.



TELECOMMUNICATION ENGINEERING

- Supply, Installation and servicing of PABX's of all sizes.
- Supply, Installation and servicing of radio phones.
- Installation of Telephone Cable Network (External Line Plant).

The Company

The Board of Directors and Management Team

OUR PROFESSIONAL TEAM

FRANK ATSAGBEDE is an Electrical Engineer with a Bachelor's Degree from University of Ilorin. He is a member of COREN. He is the Managing Director of Orri-tech Nigeria Limited. He worked as a project engineer for Fujikura Nigeria Limited, as a senior engineer for Soko-Tech Nigeria Limited and rose to General Manager. He is skilled in design & implementation of electro/mechanical systems, power lines, transformer substations and telecommunication systems. He has also attended several management and training courses locally and outside the country. He has over 27 years experience in the industry.

FEMI ADEKANLE is an Electrical Engineer with a Higher National Diploma from Yaba College of Technology and a PGD from Federal University of Technology, Akure. He worked as an Engineer with Powertron Nigeria Limited and Costain Plc. He has successfully executed various multi-million naira projects. He is the Project Director with Orri-tech Nigeria Limited and heads the Engineering Department.

BAMIDELE OWOYEYE is an Electrical Engineer with a Higher National Diploma from Yaba College of Technology. He worked at Soko-Tech Nigeria Limited. He has successfully executed various multimillion naira projects. He is a Project Manager with Orri-Tech Nigeria Limited.

RAMON TAOFIK is an Mechanical Engineer with a Higher National Diploma from Kwara State Polytechnic. He has worked with Neoong Engineering & Construction Limited as a project engineer. He is a project Manager with Orri-Tech Nigeria Limited.

DEJONWO OYINKANSOLA is a Quantity Surveyor with a B.Sc from Obafemi Awolowo University, Ile-Ife. She is a member of the Nigerian Institute of Quantity Surveyors (NIQS). She worked with Contemporary Group as a project Quantity Surveyor. She is a Senior Quantity Surveyor with Orri-Tech Nigeria Limited and heads the Commercial Department.

OHIDA MAIYAKI is an Electrical Engineer with B.Eng. Honours from University of Ilorin, Kwara State. He has worked as an Electrical Design Engineer for Sail Petroleum and Gas Services Limited. He is presently a Senior Project Engineer in Orritech Nigeria Limited

ODU OLUDARE STEPHEN is an Electrical Engineer with a Higher National Diploma from The Federal Polytechnic, Ado-Ekiti. He holds a post-graduate certificate in Electrical/Electronics Engineering from Ladoke Akintola University of Technology and He is a member of National Association of Technologist in Engineering (NATE). He is a Graduate member of Nigerian Institute of Management (GNIM) and also a member of Nigeria Institute of Safety Professional (NISIP) and presently holds a certification in Project Management Professional (PMP). He has successfully executed various multimillion naira projects. He has many years of experience in Electrical engineering which has been proven by his consistency in delivery as a Senior Project Engineer with Orri-tech Nig. Ltd.

AINA OLAYINKA OLUWASEGUN is a Mechanical Engineer with a B.Sc from Lagos State University, Ojo. He is a member of COREN, Nigerian Society of Engineers (MNSE), American Society of Mechanical Engineers (ASME) and a member of ASHRAE. He has successfully executed numerous projects as a Mechanical Engineer with Systime Engineering Ltd and is now a Senior Project Engineer with Orri-Tech Nig. Ltd.

OYINLOYE OYEDEJI ELISHA is an Electrical Engineer with B.Eng from University of Ilorin. He is a member of COREN and also a member of Nigerian Society of Engineers (MNSE). He is well experienced and has successfully executed numerous projects as an Electrical Engineer with Nigeria Mobile Telecommunication (MTNL) and also with Bi-Water Construction Company and is now a Senior Project Engineer with Orri-Tech Nig. Ltd.

OLOWOSILE SANMI JOSSY is a Quantity Surveyor with B.Tech from Federal University of Technology, Akure. He is a Graduate member of Nigerian Institute of Management (GNIM) and a Full member of Nigerian Institute of Classic Entrepreneurship (MCent), he is also a Probationer member of the Nigerian Institute of Quantity Surveyor (PNIQS) and presently holds a certification in Project Management Professional (PMP) and possesses a certificate in Quality Engineering Management (QEM). He has also attended several management and infrastructural development seminars. He has worked with Urban Shelter Nig. Ltd as a Trainee Quantity Surveyor and as a Service Engineer with Logay Investment, he took up a managerial position in Strategic and Operational Planning Department with CNN Integral Concepts before he later joined Orri-Tech Nig. Ltd as a Quantity Surveyor.





Our People

We believed that maintaining in-house artisans and other experienced, well-trained and motivated technicians and personnel ensures that we provide you with not just the solutions but doing so with in the most timely and professional manner with a world-class approach.

Orri-tech Nigeria Limited boasts of a well motivated and trained workforce that exceeds 80 persons (Nigerian professionals comprising Engineers, Technologists, Technicians & Craftsmen, supported by a well managed and financed administrative team.

Training Policy

It is our policy to constantly and consistently train and retrain our personnel to enable us maintain the quality and ethical standards that describes and defines our operations.

On the job practical training is complemented by structured training programs. We encourage our employees through incentives and rewards that take pro-active steps to improve their skill. we are constantly on the lookout for competent, talented people to be trained and developed.





Quality Policy

We are committed to conducting our operations, delivering products and services to our clients with standards that fully meets and exceed the quality requirements of our clients, or where such quality standards are not specified, the international standards for the specific operations are applied.

OBJECTIVES

In achieving our quality control and assurance policy we have the following objectives:

- To provide quality driven services at all times
- To ensure that quality specifications are adhered to at all times
- To provide information on procedures and documentation for the purpose of ensuring that our quality assurance and control are met
- To review and audit in-house quality assurance and Control procedures on each and every project with regards to their adequacy and take if necessary corrective actions for the whole range of our operations.
- To manage, maintain and control all work procedures and processes in line with established Quality Assurance and Control parameters, boundaries and definitions.

Quality Control

In line with our statement "We have the solution" indicates our commitment to quality customer satisfaction, providing value added engineering solutions to your electrical, telecommunication and mechanical projects

We opt for a 100% quality provision of service to our clients. Every project is given the same level of attention to detail and provision of quality. We believe that a client's project, irrespective of size, is a venture of value and we treat it as such. All projects receive 100% attention to detail.

Our company operates with international standards of excellence, reliability and quality in the Nigerian Engineering field. With this we stand out

In-house technicians and professional support staff at our corporate office and in the various sites are well motivated and personally committed to expedite duties in conformance with laid down procedures and principles. Our documented procedures and processes are reviewed periodically to determine their adequacy in conformity with emerging industry trends such as the oil and gas industry.

We have been working towards ISO certification and auditing.

The Company

Health and Safety Objective

Orri-Tech Nigeria Limited is committed to providing a safe and healthy work environment for its stakeholders and to conducting its various businesses in a safe manner. Healthy and Safety are core values that are incorporated into all aspects of our business.

We integrate health and safety objectives into our management systems at all levels. Management is accountable for prevention of injuries and occupational illnesses. Everyone working in Orri-Tech expect a safe and healthy work environment and in turn, we expect each and everyone to contribute to that safe environment through responsible behaviour.

Each and every one is expected to demonstrate that health and safety are core values through visible commitment and active engagement of each other. When it comes to health and safety, Orri-Tech Nigeria Limited believes the only acceptable performance is the number zero for accidents, incidents or occupational illnesses. Reaching this goal is critical for us in our drive to attain excellence



Environmental Policy and Community Relationship Statement

Our company is committed to maintaining excellent relations and support local communities as well as respect the local environment and avoid any activities that may damage it.

It is the policy of Orri-Tech Nigeria Limited to:

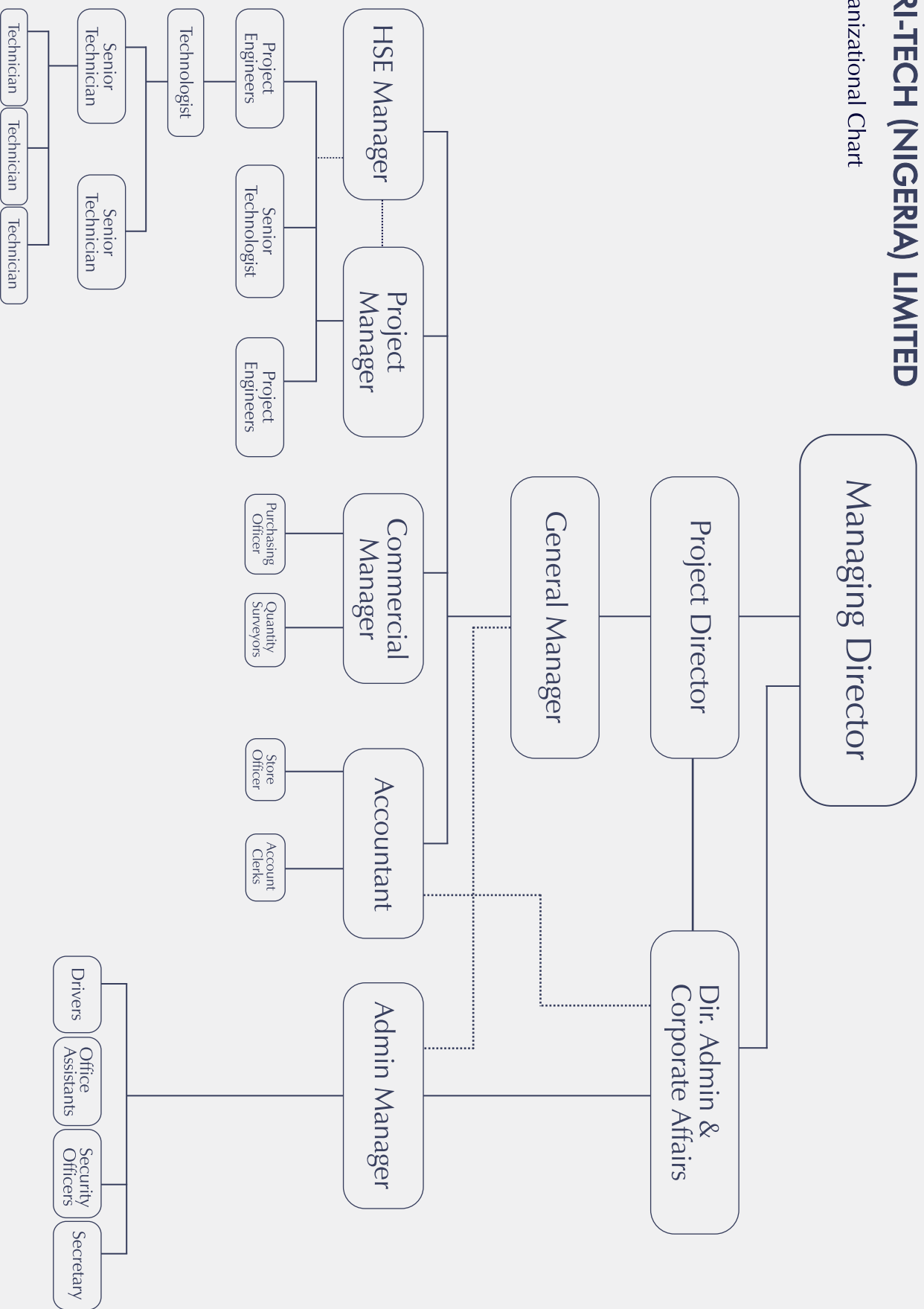
- Comply strictly to environmental protection issues emanating from our host communities.
- Source labor substantially from within the local community where we work thereby creating employment for local people.
- Involve local sub-contractors and suppliers in our projects by awarding sub-contract work and utilizing supply of good quality materials available locally.
- Provide community development and to the host community.
- The company operates a standard employment policy without discrimination as detailed by NJIC.



The Company

ORRI-TECH (NIGERIA) LIMITED

Organizational Chart



Our Clientelle



Project History Completed

S/N	PROJECT DESCRIPTION	CLIENT	CONSULTANT
1	Electrical and Mechanical Installations for CES building - Calabar	The Church of Jesus Christ of Latter-Day Saints	CA CONSULTANTS
2	Electrical and Mechanical Installations for Residential Development at Glover, Ikoyi Lagos.	Mikeng Nig. Ltd.	AKINTOLA OSHO ARCHITECTS
3	Electrical and Mechanical Installations for Church Meeting House at Eket, Warri, Delta State.	The Church of Jesus Christ of Latter-Day Saints	EH1 - EBOLO NIG. LTD.
4	Electrical and Mechanical Installations for Church Meeting House at Owerri	The Church of Jesus Christ of Latter-Day Saints	DESIGN MODULES
5	External Electrification of Commissioners Qtrs (Asaba) Delta State	Ministry of Housing, Delta State	GEORGE SPIROPOULOS AND ASSOCIATES
6	Electrical and Mechanical Installations for BA - FLATS at Ikoyi	Vita Construction Ltd.	JAMES CUBIT ARCHITECTS
7	Electrical and Mechanical Installations for Dev at 8 Milverton road, Ikoyi (Coscharis Motors Ltd.)	Vita Construction Ltd.	BMI CONSULTANTS
8	Electrical and Mechanical Installations for Church Meeting House at Ihogbe - Benin.	The Church of Jesus Christ of Latter-Day Saints	ADENIYI COKER ARCHITECTS LIMITED PIDEC CONSULTANTS
9	Mechanical Installations for Dev. At 37, Cooper Road, Ikoyi.	Cooper Road Building Limited	CONSEM ASSOCIATES
10	Mechanical Installations at Obajana Cement Housing Colony Project	ARAB CONTRACTORS	ARAB CONTRACTORS
11	Electrical and Ancillary Services for MTN Network office V/I Lagos.	MTN	CA CONSULTANTS
12	M&E Installations for private residence at Ilado Close, Ikoyi	Vita Construction	ADENIYI COKER ARCHITECTS LIMITED MFA PARTNERSHIP
13	M&E Installations for Private Development at Ikoyi Foreshore	Mikeng Nig. Ltd.	ECAD CONSULTANTS
14	Electrical Installations for MTN at Agip house Victoria Island, Lagos.	MTN	CA CONSULTANTS
15	Electrical and Mechanical Installations for MTN at Churchgate Building V/I Lagos.	MTN	MTN
16	Electrical Installations for MTN Maritime House Upgrade 2.	MTN	CA CONSULTANTS
17	M&E Installations for Housing Estate at Utako, Abuja.	Amarc Consultants	KUNLE OGUNBAYO & ASSOCIATES
18	M&E Installations for Lagoon Hospital Renovation	Lagoon Hospital	ECAD CONSULTANTS A + O ASSOCIATES
19	Electrical Installations for MTN Refurbishment at Golden Plaza, Falomo Ikoyi, Lagos.	MTN	CA CONSULTANTS

Project History Completed

S/N	PROJECT DESCRIPTION	CLIENT	CONSULTANT
20	M&E Installations for Block of Luxury flats at Oju-Olugbun Street, Victoria Island, Lagos	Vita Construction Ltd.	MOLECULAR CONSULTANTS & ASSOCIATES
21	Electrical Installations for Diamond Bank Abuja Branch.	Diamond Bank Plc.	DIAMOND BANK PLC
22	Mechanical Installations for Lagoon School Phase 2	NAWA	NIYEX CONSULTING
23	Electrical Installations for MTN Golden Plaza Falomo (5th & 6th floor)	MTN	CA CONSULTANTS
24	Electrical Installations for Diamond Bank Lekki Branch	DIAMOND BANK	DIAMOND BANK PLC
25	Mechanical Installations for Viva - Methanol Factory Akodo - Lagos	Vita Construction Ltd.	KUNLE OGUNBAYO & ASSOCIATES
26	M&E Installations at Plot (J46 & 47) Plot (40,50,51 & 52) Banana Island, Lagos.	First Marina Trust Ltd	BCL Ltd
27	Mechanical and Electrical Installations for Chevron Mess Hall Project at Escravos	Chevron Nig. Ltd.	CHEVRON NIG. LTD
28	M & E Installations for Federal High Court Osogbo	Federal Govt (Judiciary)	HOMES & ENVIRONMENT ASSOCIATES
29	Electrical Installations for CBN Learning Centre Satellite Town Lagos	Vita Construction Ltd.	SYSTIME ENGINEERING LTD
30	Electrical / Mechanical Installation at Get Entertainment Centre	GET LTD	MECHOLECT ASSOCIATES
31	M&E Installations for Federal High Court, Akure, Ondo State	Aritse Ventures Ltd	HOMES & ENVIRONMENT ASSOCIATES
32	Electrical Installation Works at Maritime house for MTN Communication Nig Ltd, Lagos	MTN	VITA CONSTRUCTION LTD
33	Electrical Installation at Disaster Recovery Centre, MTN Regional Office, Aromire, Lagos.	MTN	MAYSSA INTL. NIG. LTD.
34	M & E Installations at Plot (J46 & 47) Plot (40, 50, 51 & 52) Banana Island, Lagos.	First Marina Trust Ltd.	BCL LTD
35	Electrical Installations for NNPC Towers on Awolowo Rd, Ikoyi	Lock International NNPC	MOA ASSOCIATES
36	Plumbing Installation Works for a Residential Development at ParkView Estate, Ikoyi, Lagos.	Multiprojects Limited	MULTIPROJECTS LTD
37	Plumbing Installation Works for Hyegeia Nigeria, Marina Rd Apapa, Lagos.	Lagoon Hospital	VITA CONSTRUCTION LTD
38	Electrical & Mechanical Installations at LOT 3 - Ihovbor Power Station, Benin.	Marubeni W.A. Ltd	NIPP

Project History Completed

S/N	PROJECT DESCRIPTION	CLIENT	CONSULTANT
39	Electrical and Mechanical Installations at Global Christian centre for Chapel of Christ our light (Protestant) University of Lagos	University of Lagos Chapel	BOLAJI IPAYE & PARTNERS
40	Piping Services for Stanbic IBTC, Ajoye Adeogun St, V/I, Lagos	Vita Construction Ltd	CA CONSULTANTS
41	Electrical Installations at MTN Communications Ltd Marina House Upgrad, Apapa, Lagos.	MTN	MAYSSA INT'L NIG. LTD.
42	Electrical and Mechanical Installations for Global Apartments at Plot 312 Akin Ogunlewe Str. Victoria Island	First Marina Trust Ltd	
43	Refurbishment of NWA Office, 6 Ahmed Onibudo V/Island	MTN	OJ & T CONSULTANTS
44	Mechanical Installations for UTC Factory at Oshodi	UTC	CPMS
45	Electrical Installations for Oando Filling Station at Igbobi, Lagos	Oando Plc	OANDO PLC
46	Electrical Installations for CBN ITI Abuja	CBN	VITA / MCADOG
47	Federal High Court HQRS Building (Maintenance of M & E Services)	Federal High Court	BOGRATE ASSOCIATES
48	Electrical & Mechanical Installation for MTN Switch for MTN Switch Centre, Owo	MTN	POWER FIELD ENGINEERING
49	Mechanical & Engineering Installations for 48Nos Luxury Flats at Oniru, for Goosepen Ltd.	First Marina Trust Ltd.	CCP CONSULTANTS
50	Mechanical & Engineering Installations for New MTN Energy Centre at Falomo, Lagos.	MTN	CA CONSULTANTS
51	Upgrade of Anthony Brothers Service Station at Uyo for Oando.	Oando Plc	OANDO PLC
52	Upgrade of Oando Service Station at Calabar	Oando Plc	OANDO PLC
53	Electrical Installations for Multistorey Office Dev. for Diamond Bank at Elegushi, Ikate Lekki, Lagos.	Diamond Bank Plc.	ALPHA ENGINEERS
54	Electrical Installations for Oriental Food Factory at Ibadan.	VITA	VITA
55	Mechanical & Engineering Installations for part of James Hope College Ph2, Agbor Project	James Hope College	CCP CONSULTANTS

Gallery



DEVELOPMENT OF INTERNATIONAL TRAINING INSTITUTE FOR CBN, ABUJA

(Electrical Installations By Orri-Tech)



Gallery



DIAMOND BANK IKATE, LEKKI, LAGOS.

(Electrical Installations By Orri-Tech)



Gallery



OFFICE COMPLEX AT TIGRIS CRESCENT, ABUJA FOR CBN

(Electrical Installations
By Orri-Tech)



Gallery



MTN ENERGY CENTRE FALOMO, IKOYI

(Electrical & Mechanical Installations
By Orri-Tech)



Gallery



CHEVRON ESCRAVOS MESS HALL

(Electrical & Mechanical Installations By Orri-Tech)

Gallery



DIAMOND BANK ADMIRALTY, LEKKI

(Electrical Installations By Orri-Tech)



Gallery



FEDERAL HIGH COURT, ADO EKITI

(Electrical & Mechanical Installations By Orri-Tech)



Gallery



FEDERAL HIGH COURT, AKURE

(Electrical & Mechanical Installations By Orri-Tech)

Gallery



FUSO ASSEMBLY PLANT, AMUWO

(Electrical & Mechanical Installations By Orri-Tech)



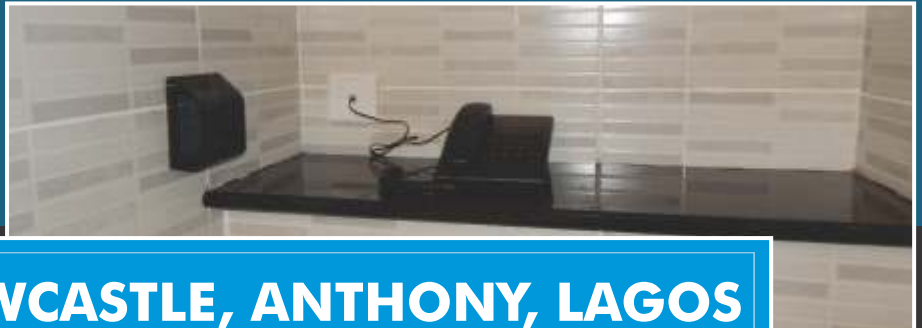
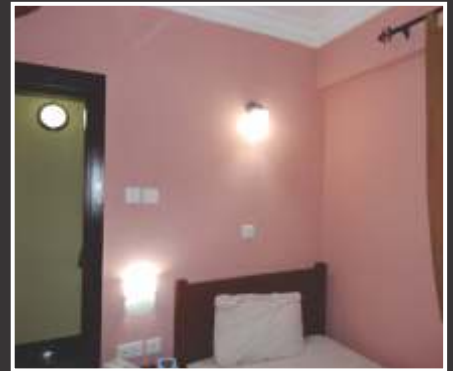


PAN ATLANTIC UNIVERSITY (PAU) RESIDENCE

(Electrical Installations By Orri-Tech)



Gallery



HOTEL NEWCASTLE, ANTHONY, LAGOS

(Electrical & Mechanical Installations (Renovation) By Orri-Tech)



Gallery



OWEL-LINKSO IKOTA, LAGOS

(Electrical & Mechanical
Installations By Orri-Tech)



Gallery



FEDERAL HIGH COURT, OSOGBO

(Electrical & Mechanical Installations By Orri-Tech)



Gallery



LUXURY FLATS FOR GOOSEPEN, ONIRU, VICTORIA ISLAND

(Electrical & Mechanical Installations By Orri-Tech)



Gallery



ORIENTAL FOODS, IBADAN

(Electrical Installations By Orri-Tech)



Gallery



PAN ATLANTIC UNIVERSITY ACADEMIC BUILDING IBEJU LEKKI, LAGOS

(Electrical Installations By Orri-Tech)



Gallery



ZEND LOGISTICS IKOYI, LAGOS

(Electrical Installations By Orri-Tech)



Gallery



TAYO ADENIROKUN MEMORIAL LECTURE THEATRE, UNILAG, AKOKA, LAGOS

(Electrical & Mechanical Installations By Orri-Tech)





THE CHURCH OF JESUS CHRIST OF THE LATTER DAY SAINTS, OGBOR HILL

(Electrical & Mechanical Installations By Orri-Tech)

WAREHOUSE AND OFFICE FOR VIVA METHANOL LTD. EPE, LAGOS

(Electrical & Mechanical Installations By Orri-Tech)



NEW CARE BRANCH FOR STANBIC IBTC BANK, AJOSE ADEOGUN, V.I.

(Plumbing Installations By Orri-Tech)



Gallery



CHAPEL OF CHRIST OUR LIGHT (PROTESTANT) UNILAG

(Electrical & Mechanical Installations By Orri-Tech)



Gallery

SATELLITE LEARNING CENTRE FOR CENTRAL BANK OF NIGERIA

(Electrical Installations By Orri-Tech)



Gallery



NNPC TOWERS, IKOYI

(Electrical Installations By Orri-Tech)

MTN MARITIME HOUSE. APAPA, LAGOS

(Electrical Installations By Orri-Tech)



Gallery



HDI OFFICE

(Electrical & Mechanical Installations By Orri-Tech)

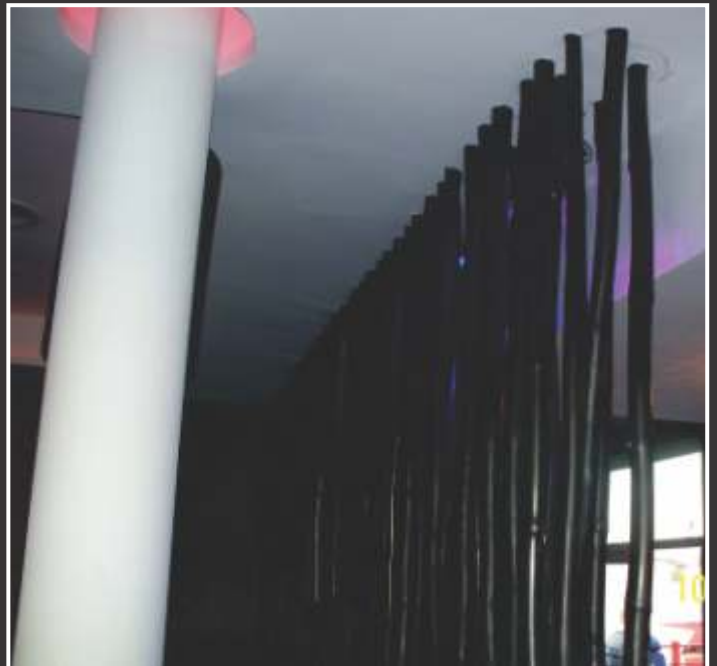


Gallery



GET ENTERTAINMENT CENTRE

(Electrical & Mechanical Installations By Orri-Tech)





Do Business With Us



ORRI-TECH
(Nig.) Ltd.

